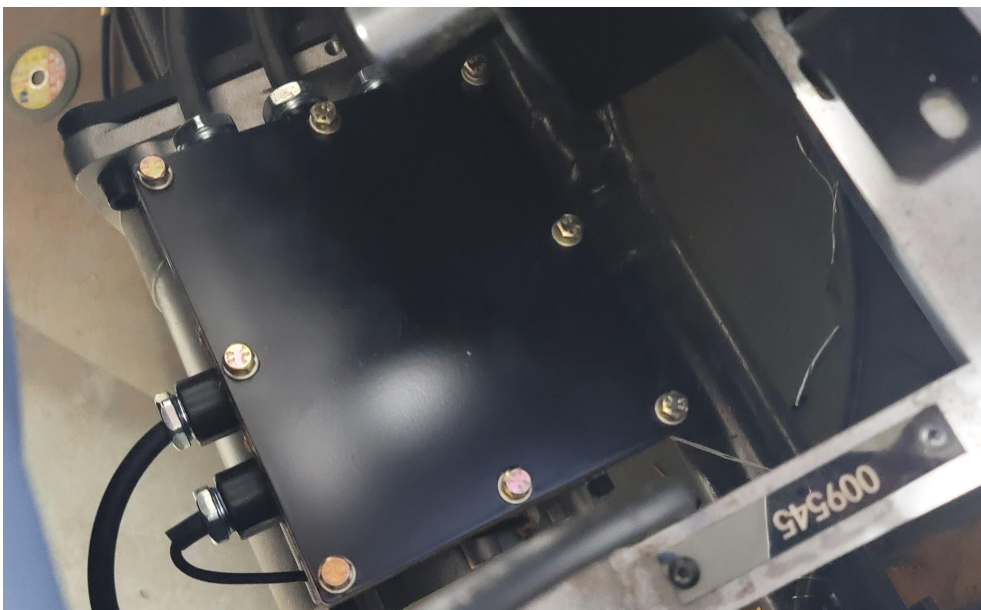
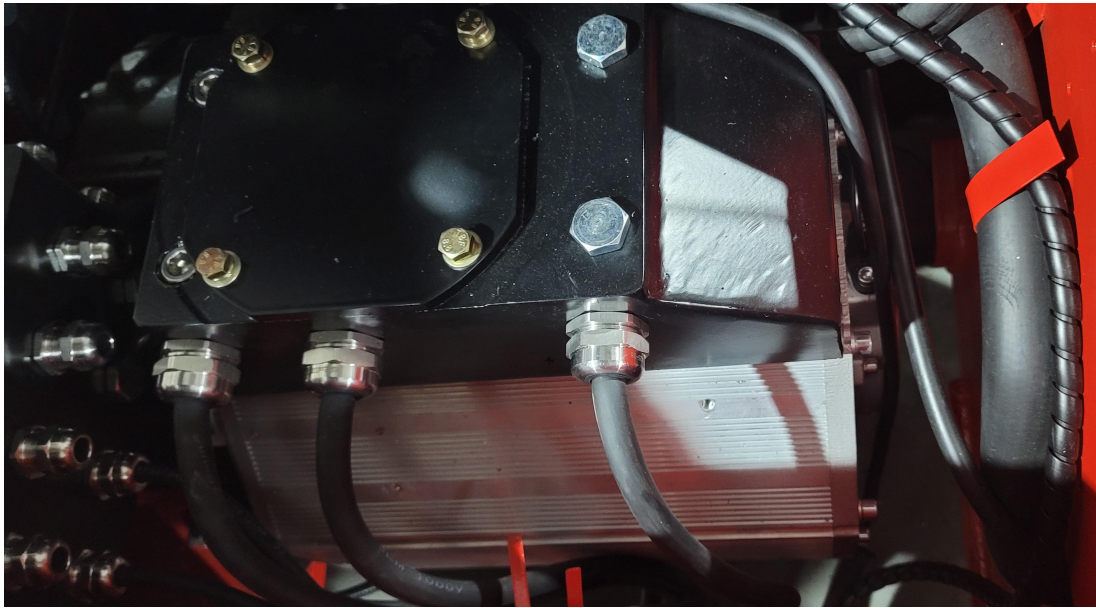

EX-PROOF SOLUTION

1、 1. Motor: The original car motor is explosion-proof.

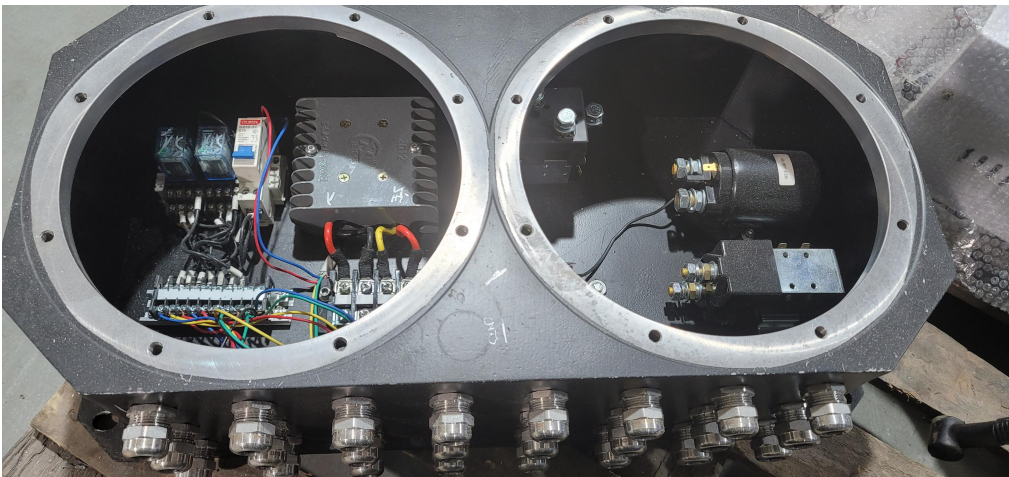


The picture is IIC class explosion-proof

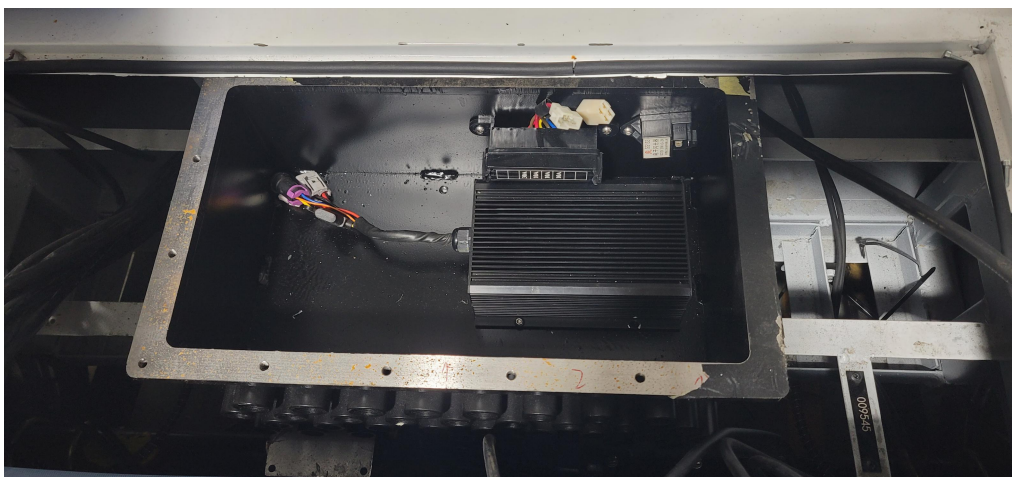




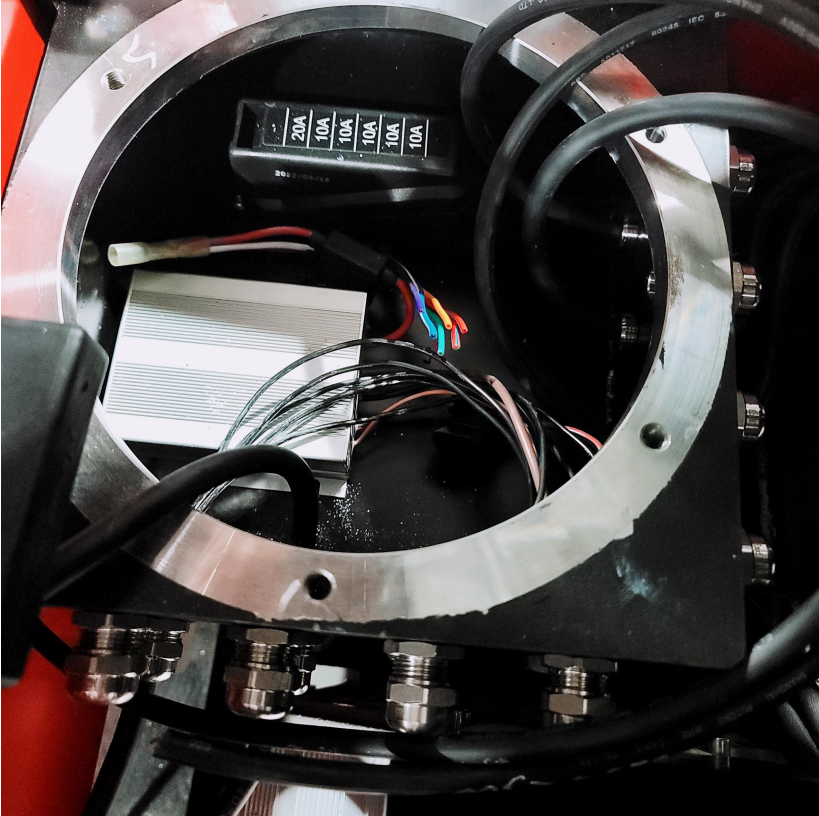
2. Flameproof explosion-proof control box: The original vehicle controller assembly and contactor are installed in the explosion-proof control box.



The picture is IIC class explosion-proof

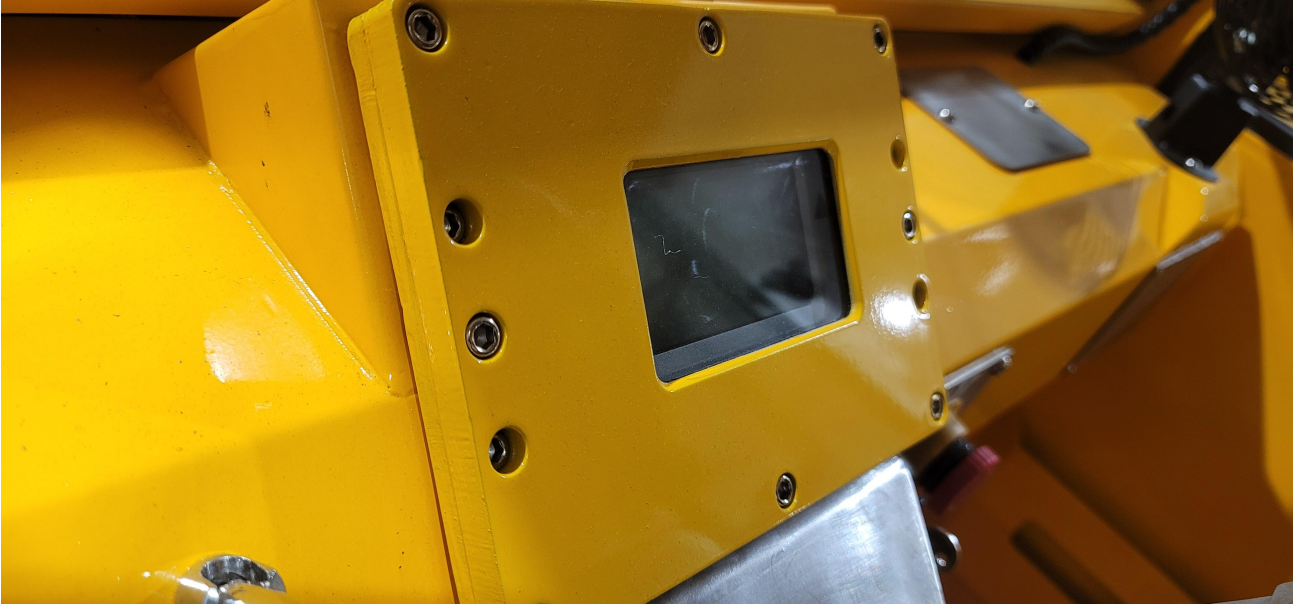


3、 3 Explosion-proof junction box: The original car converter, fuse box and flasher are installed in the explosion-proof junction box.



The picture is IIC class explosion-proof

4、 Explosion-proof control box: The liquid crystal instrument/explosion-proof switch module is installed in the explosion-proof box.



5 Battery: increased safety type explosion-proof treatment, installed in the explosion-proof battery box, the battery box has a vent hole.



6、 Replace the original car lamps with explosion-proof lamps



Explosion-proof headlights and explosion-proof signal lights



Explosion-proof sound and light alarm

7、The charger and vehicle charging interface are replaced with explosion-proof power connectors



8、 Replace the original car horn with an explosion-proof electric horn



9、 Accelerator casting type explosion-proof modification



9、 The main line of the whole vehicle is replaced with a special flame-retardant cable for explosion-proof

